



960 West Barre Road • Archbold, OH 43502  
1.800.446.3040 • [www.fypon.com](http://www.fypon.com)

Fypon® and E-Vent™ are trademarks of Fypon, Ltd. PL Premium® is a registered trademark of OSI Sealants, Inc. Changes to our products may have been made since publication. All statements, technical information and recommendations about Fypon products are believed to be reliable, but do not constitute a guarantee or warranty. Please consult your sales representative prior to purchasing. ©2005 Fypon, Ltd. All rights reserved.

**When it comes to building or remodeling a home, everyone has a lot of questions.**

**Architectural  
Millwork**



# Q & A

## Fortunately, we've got a lot of answers.

If you're building a new home, remodeling an old one or designing a commercial space, you've come to the right place. At **Fypon**®, we make the architectural millwork products that make homes and commercial buildings unforgettable, inside and out. The following pages introduce you to our products, and explain why they're some of the best around. If you have any questions, our phone number and website are inside the back cover. Call or email us any time. After all, answers to questions and solutions for problems are what we're all about.

### WHAT'S INSIDE

Interior Solutions .....	2
Exterior Solutions .....	3
Louvers .....	4-5
E-Vent™ Systems .....	6-7
Window and Entrance Trim .....	8-9
Mouldings .....	10-11
Decorative Millwork .....	12-13
Balustrade Systems .....	14-15
Columns and Lamp Posts .....	16-17
Custom Fabrication and Design .....	18
Installation .....	19
Customer Service .....	20

**Q What can decorative millwork do for my home's interior?**



Interior millwork and trim really brings out the Georgian flavor of this bedroom.

**A** Anything you want it to. No matter what style your home is, Fypon millwork can transform your home's interior into a true showplace. Crown Moulding and trim can work wonders to blend different rooms and open spaces together. From spectacular Niches to breathtaking Medallions, Fypon products can enhance your home's interior like nothing else. If your home is influenced by a specific architectural style, we can make that style much more authentic. And if your home needs a little help in the style department altogether, we can help there, too.

**Interior Products**

- Ceiling Medallions
- Mouldings
- Window Trim
- Wall Niches and Shelves
- Miterless Crown Mouldings

**Q What can I do to add some interest to the exterior of my home?**

**A** The sky is the limit. Well, almost. You might find that less is more and simply decide to dress up your windows with Crossheads and Keystones. Or, you might find that more is more and go a little crazy. It really depends on the style of your home, your personal tastes and what you want to achieve. Louvers and E-Vents can complement your Window and Entrance Trim, while Gable Pediments and Corbels provide an especially dramatic touch. Whatever you decide, you will be surprised by the added curb appeal.



This home's exterior is made even more impressive with Pilasters and a Keystoned Pediment.

**Exterior Products**

- Louvers
- E-Vent™ Systems
- Window and Door Trim
- Decorative Millwork
- Balustrade Systems



This home uses a variety of Fypon products—window trim, entrance trim and E-vent systems.

This round Louver has been accessorized with Keystones. Pretty, isn't it?



# Q What the heck is a Louver, anyway?



This traditional, triangle vented Louver fits snugly into the peak of this home.



**A** Technically speaking, a Louver is an opening in a wall or ceiling for ventilation, with slanted fins to exclude rain or sun. We define them as those beautiful accents we make that cover up ugly attic ventilation vents and dress up roof peaks on the side of your house. We've designed a wide variety of shapes and styles to fit your needs. Some are functional, some are decorative. And some styles are available in a stainable woodgrain finish.



## Louvers

### Functional Louvers

Our slats are moulded at a steep 45-degree angle to keep out rain and feature 3/8" openings for great airflow. All are backed with a non-corrosive fiberglass screen to keep the bugs out.

### Decorative Louvers

For buildings that don't require attic ventilation, we also offer non-venting decorative Louvers in a wide variety of styles and sizes. These allow you to create a classic look and feel for any building.

### Styles



Octagon\*



Round\*  
with Flat Trim and Keystones



Round\*



Half Round\*



Quarter Round



Vertical\*



Vertical Oval



Horizontal Oval



Horizontal Oval  
with Flat Trim and  
Keystones



Diamond



Cathedral\*



Triangle



Peaked



Eyebrow

\*These items are available with a natural redwood texture and color-ready to stain or paint.

Our E-Vent systems offer different decorative options just like Louvers. Shown here in a Combination Crown style.



# Q What's the purpose for using an E-Vent™ system?



Originally designed for homes with steep roofs, E-Vent systems are a popular choice on many types of homes.

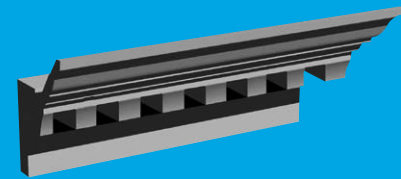


**A** Like Louvers, our E-Vent systems help the attic breathe. They extend the life expectancy of roofs and attic insulation by reducing moisture and heat buildup in warm climates, while helping to prevent ice dams and reduce condensation in colder ones. Our unique E-Vent systems do that and more: they help frame the house between the roof and the walls pretty as a picture.

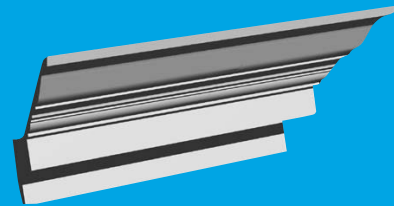
## E-Vent Systems...like money in the bank.

Well, sort of. Our E-Vent systems save time and money all the way around. In new construction applications, they eliminate the need to extend soffit overhangs, which in turn, eliminates soffit material, accessories and labor. They also downsize truss tails, reducing the amount of shingles and roof sheathing required for the job.

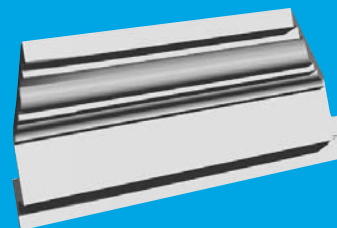
## Styles



Crown Dentil



Combination Crown



Massive Crown

A typical window configuration is made downright impressive with Fypon window trim.



# Q How do I know which style of window and entrance trim works best for my house?

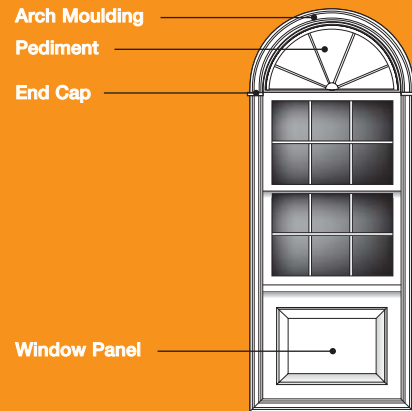
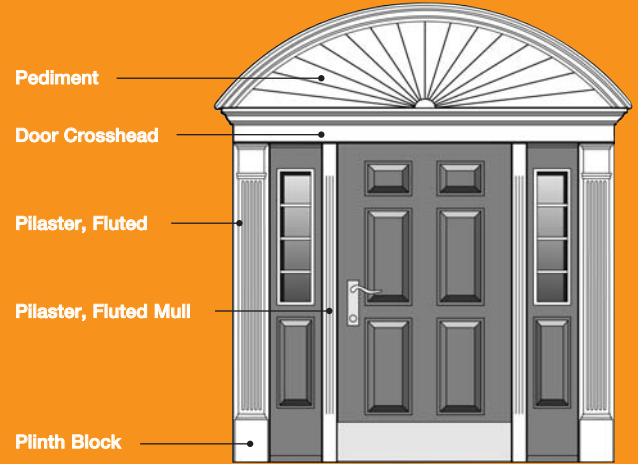
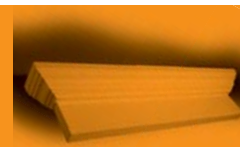


We love this. The giant arch above the half round window works really well.



Just like all decorative touches, it all depends on your individual tastes and the look you are going for. A good place to start would be to assess your home's architectural style and determine which category your home fits into. Then, choose from our extensive collection of window and entrance trim for both inside and outside. From Pilasters, Crossheads and Pediments to arch trim and moulded profiles, we can help you create a variety of breathtaking combinations, giving you a great opportunity to express your individual style.

## Window and Entrance Trim



Pilaster



Arched Trim



Crosshead



Easy-Install Crosshead



Pediment



Window Panel



Keystone

Many styles are available for window and entrance trim.

This large Dentil Moulding is a great example of exterior applications. Notice how neatly it bridges the siding and the soffit.



## Q Can moulding pieces be combined?



This crowning trim has been created from four different mouldings.



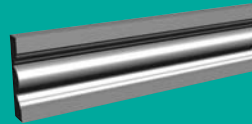
**A** Yes. In fact, we strongly recommend it. Hundreds have already been combined and moulded into one piece to save you time and labor costs. And if these aren't enough, we offer the services of our Special Order Department, where the only limits are the laws of physics (and your imagination). Miterless Crown Moulding Systems feature pre-mitered inside and outside corners for remarkably fast and easy installation. So go ahead. Mix and match to your heart's content.

## Moulding

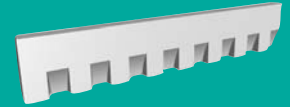
### Mouldings, mouldings and more mouldings.

If you want it, chances are we've got it. From simple designs to intricate details, we've got hundreds of different types of mouldings to tickle your fancy.

#### Styles\*



Window and Door Casing



Dentil Moulding



Egg and Dart Moulding



Chair Rail Moulding

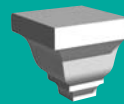


Ribbon and Bow Moulding



Stonable Moulding

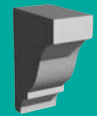
#### Accessories



Outside Corners



Inside Corners



Divider Blocks and End Caps



Rosettes



Keystones



One-piece Miterless Corner

\*We offer hundreds of moulding styles.

Corbels add interesting accents anywhere they are used.



Q

## Can decorative millwork pieces be used inside as well as outside?



Notice how the Gable Pediment in the roof peak creates a Victorian flavor.



All Fypon products can be used both inside and outside. Dentil Blocks, Brackets and Corbels can add interesting details both inside and outside. Niches are another great example. Inside, they make a great place for displaying art and collectibles. Outside, they are a great place for plants overlooking a garden or patio. Our Medallions are the perfect way to transform your ceilings into centerpieces, and our unique two-piece Medallions make installation a breeze.

## Decorative Millwork



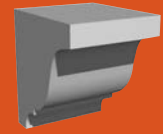
### So many choices, so little time.

Because there are just so many choices of decorative millwork and places to use it, it might be a little difficult knowing where to start. Go simple or elaborate. Either way, we've got a whole bunch of choices for you. But the best part is, all Fypon decorative millwork products are easy to install, so you can spend more time enjoying them.

### Styles



Brackets



Dentil Blocks



Corbels



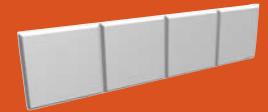
Niches



Niches with Shell



Gable Pediments



Quoins



Ceiling Medallions



Two-piece Ceiling Medallion

Although they look pretty intimidating, Balustrade Systems are really easy to install.



## Q How sturdy are your Balustrade Systems?



There are many thicknesses as well as styles of balusters to choose from.

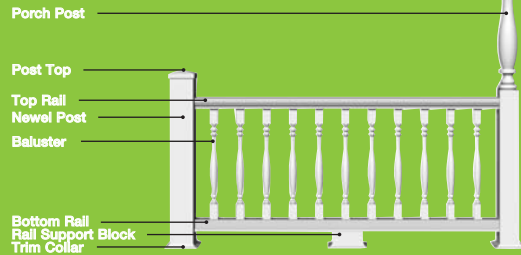


**A** Very sturdy. Balustrade Systems, like all of our other products, are constructed of high-density material. To meet structural and safety requirements, Fypon balusters are reinforced with fiberglass. Our rails and newels are reinforced with PVC pipe. Our porch posts and load-bearing balusters are reinforced with steel. The look of wood, the strength of steel and effortless maintenance. You just can't get any better than that.

## Balustrade Systems

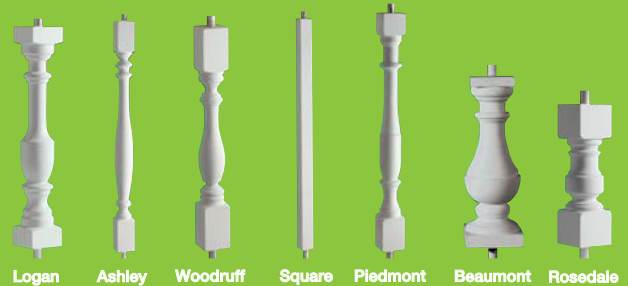


### Parts of the Balustrade System



Balustrade Systems are available in a variety of sizes and styles. For comprehensive sizing and ordering information, please see the Fypon Product Catalog.

### Styles



Columns add instant prestige to any façade and require virtually no upkeep.



## Columns and Lamp Posts

# Q Are Fypon Columns and Lamp Posts load-bearing or decorative?



Used as a load-bearing support or as a stunning example of architectural style, Columns establish boundaries and lead the eye skyward.



**A** Both. It all depends on the application. Because Columns and Lamp Posts are made from urethane, they are resistant to moisture and insect infestation, making them perfect for use outside the home. Decorative Lamp Posts are durable and withstand the harsh elements of every season. If load-bearing capabilities are needed, Columns can be ordered with steel reinforcements customized for your support weight. Inside the home, Columns add drama and beauty that cannot be matched.

### Stand and Deliver

Fypon Columns can create a stately entrance to your home, heralding back to the architectural styles this nation was founded upon. And when used inside, Columns project a feeling of strength and longevity that no other feature of home décor can.



Fluted Square Column



Plain Panel Square Column



Flat Square Column



Serpentine Column



Lamp Post A



Lamp Post B



Deco Cap



Deco Base

With an original height of eight feet, Lamp Posts can easily be trimmed to any desired height and can be painted any color you wish.

**Q Can Fypon create a custom-sized, or even a totally original millwork piece for me?**



**A** Without a doubt. In fact, fabricated products (modifying catalog items into special sizes or designs) generally ship within five (5) working days from order entry. That's the same great turnaround time you can expect with all Fypon products. Custom designs, which involve the creation of new masters and molds to your specifications, require a bit more lead time, so call us to discuss production specifications and delivery schedules. Our master craftsmen will take your ideas and make them into reality.

**Q Are Fypon products better than wood?**



To make sure the quality of our products is the best in the industry, we continuously inspect and replace our moulds regularly—ensuring that edge lines stay crisp and the intricate details are always perfect.

This dramatic miterless corner eliminates the need to figure corner angles or use a miter saw.



**A** Most definitely. All Fypon products are made from high-density materials that won't rust, rot, warp or distort. They are weather-resistant and virtually maintenance-free. And unlike wood, they resist insect infestations. Best of all, Fypon products install very easily with common woodworking tools, fasteners and construction adhesive.

*Any more*  
**QUESTIONS?**  
*Call or click.*

**800.446.3040**  
[www.fypon.com](http://www.fypon.com)

**Talk to a real  
live person!  
8am to 5pm EST  
Monday-Friday**

